



Index

2015 Annual Report

1. Summary
2. Country Program
3. SDGs 2030
4. Activities and organization
5. Trade Commission
6. Finance and Not-for-Profit
7. Global Compact
8. Digital Labor Value & SHR
9. WSF News
10. Contact

1. Summary

In January the oil price halved. After six years cooperation climate solutions became the integral UN SDG 2030 - Sustainable Development Goals, signed in December at Paris. Remaining works till mid 2016 are SDG Targets, Finance, and Monitoring. WSF organization reached over 80 volunteers, managed by Balanced Scorecard and periodic department meetings. Processes and handbooks, job support, and education tools made work delegation easier. But it didn't stabilise the learning curve.



CDM Sectors, cover 240 CO₂ cleaner technologies.

2. Country Program

During the year we found brains and hands to work out the program, bringing together the CDM - Clean Development Mechanism, CDP - Carbon Disclosure Project members, INDC - Intended Nationally Determined Contributions, and UN LoanScheme, and the SDGs. At the end of 2015 a draft Country Brochure was ready and we start to develop a toolkit for country analysis with 24 research items: 8 Needs & Projects, 8 Finance & Expertise, 8 UN & Governments networks. Education, training, and supporting the volunteers was fun and brought awareness and discussions about Why we, How effective, and What first? During the a core group formed itself which empowered trust by others.

wsf-eve

3. SDGs 2030

As member of the UN Ad Hoc Working Group on the Durban Platform for Enhanced Action (ADP) WSF contributed together with the "Commons Cluster" on monthly basis to the creation of the UN Agenda 2015 - 2030, also called the Sustainable Development Agenda.

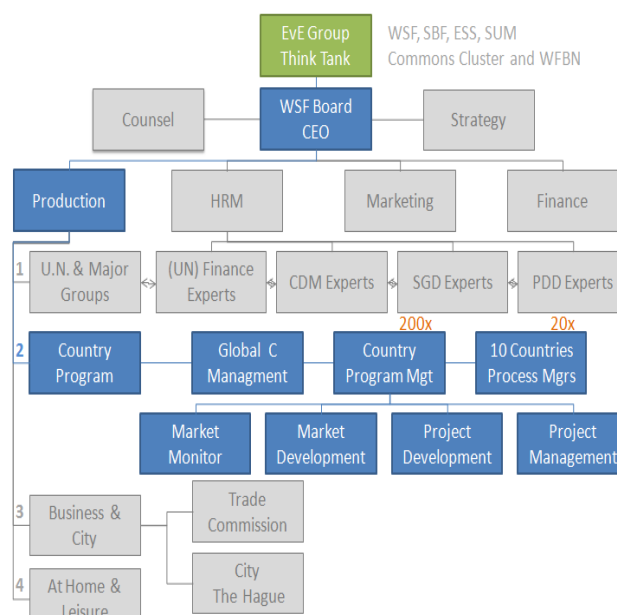


40 countries, 9 major groups and approximately 30 NGO worked several years to define the 17 goals and 169 sub goals, based analysis of the results of the Millennium Goals 2000 - 2015 and new insights and global needs.



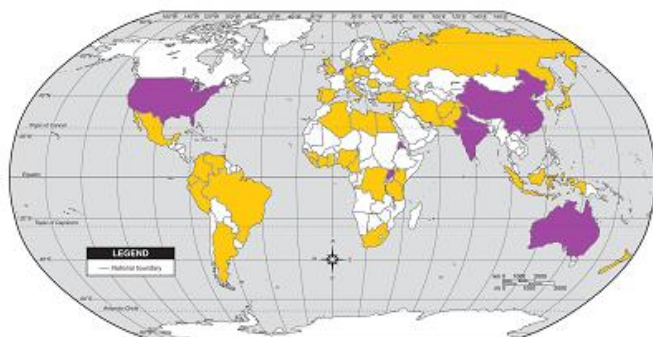
4. Activities and organization

2015 was the first full year with volunteers. Much was done to build a strong Human Resources Department with Units as Recruitment, Admin, Job support, and education. In the matrix we formed





departments like Strategy, Marketing, Finance, and Production versus UN/MG, Countries, City/Business, and Private Services. 50% of the 86 volunteers worked Countries related.

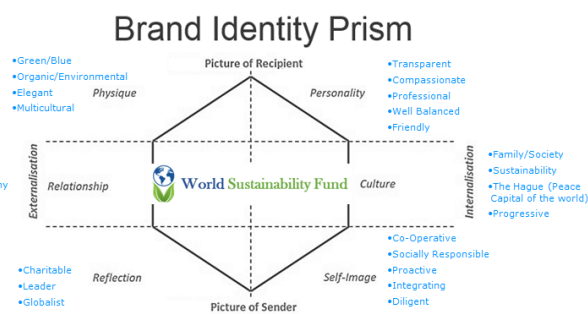


70% have a Master degree and 30% a Bachelor. Over 40 nationalities are covered, speaking for 100% bilingual (English as second), 65% trilingual or more.

2015-11-18		Actual:	Open:
		Total:	86 361
Think Tank:	Kelly Merks, Anne-Jean de Vries,	4	2
WSF Board:	EvE, DS, (JKK, DF)	2	2
WSF Departments:		Number of Staff:	
Sections:	Managers:	Actual:	Open:
Strategy Team Staff	Emile	1	1
	Sophie	1	0
	Guniz	1	0
	Eva?	1	0
Strategy	Cira Valbuena	1	2
Core	Marinna Tomková	1	2
Legal	Raffaele Coscarelli & Umair Ily	1	2
Security	Emma Bregonje	1	2
2 v	Balanced Scorecard & Quality	0	3
IT Management	Nicola Hornsby	1	2

Marketing started to build a new website but failed by disintegration of links to key info. But they were successful in defining WSF as a Brand (Love Mark).

BI Prism – WSF Love Mark



The Multi-media plan served the communication under the volunteer network, including Facebook, Twitter, and LinkedIn. For the focus on the Country Program it needs really 24/7 monitoring and input.

5. Trade Commission

In 2015 five commodity contracts became signed with a turn-over of 3.6B\$ and over 240M\$ margin. At the end no deliveries came true. The produced framework and presentations will support our later project products sales. For now we stopped with it.

6. Finance and Not-for-Profit

WSF did not found investors in 2015, so the cost of the organization where privately funded as a gift by Emile, round about 18k€. Time spending and cost were considered:

Emile 11x 240 =	2,640 hrs
Daniëlle 5x 8 =	40 hrs
Other volunteers, 80/2x10x48	19,200 hrs
Together	21,880 hrs

Cost 2015 if paid by WSF

General Expenses	2,000
Traveling	2,000
Office	14,000
Organization á € 50 per hour	1,094,000
Cost 2015	1,112,000

Balance per 31-12-2015

Assets WSF:	35,000,000
Vision, Mission, Concepts	10,000,000
Organization and Network	15,000,000
Country Program	5,000,000
Project expertise	5,000,000
Shift, Bronning, dLv life cycle	EvE property
Cash revenue	0
Liabilities WSF:	1,712,000
Cost till 2016 if paid by WSF	600,000
Cost 2015 if paid by WSF	1,112,000
Equity WSF	33,288,000



7. UN Global Compact

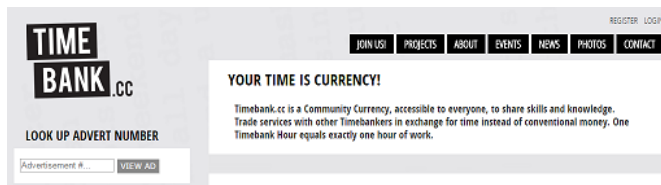
WSF became a Member of UN Global Compact. The UN Global Compact is the World's largest corporate sustainability initiative. It's a call to companies to align strategies and operations with universal principles on human rights, labor, environment and anti-corruption, and take actions that advance societal goals.

To make this happen, the UN Global Compact supports companies to:



1. Do business responsibly by aligning their strategies and operations with Ten Principles on human rights, labor, environment and anti-corruption; and
2. Take strategic actions to advance broader societal goals, such as the UN Sustainable Development Goals, with an emphasis on collaboration and innovation.

Over 8,000 companies and 4,000 NGO's are member. The Netherlands counts 120 of them and the GCNL organization keeps office in The Hague at VNO-NCW.



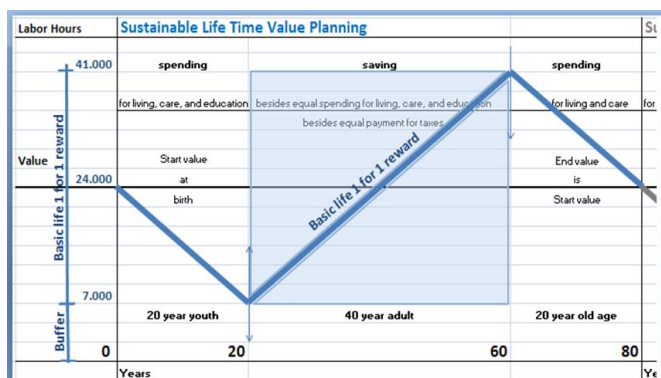
8. Digital Labor Value & SHR

Mid 2015 contact was made with TimeBank.cc to look if they are able to serve as dLv – digital Labor value service, to avoid inflation looses (See research 2014). Their system didn't solved the 0.00 start value problem, so customers had now means to spend. Second half of 2015 Emile started to solve

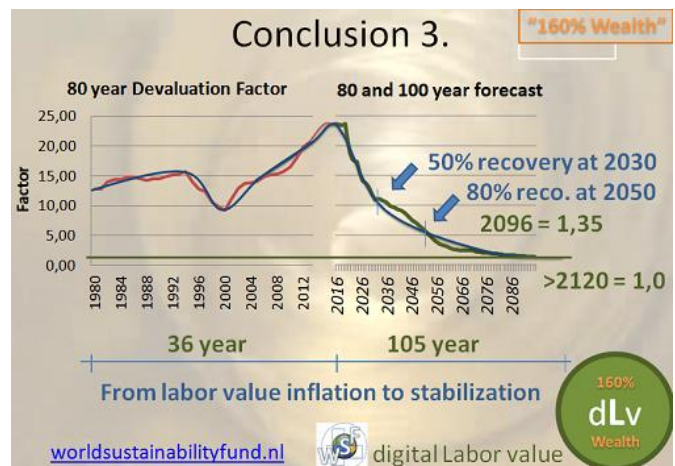
Sustainable Human Rights Jobs

1. Labor Own Land 6h/w or $35 \times 40 = 6,8$ year
2. Social Labor 8 h/w or $8/35 \times 40 = 7,8$ year
3. Infrastructure Labor 4 h/w or 3,9 year
1-3 together = 18,5 year
4. Commercial Labor 17 h/w or 21,5 year
5. Philanthropy by extra activities

the problem by estimation of lifetime labor value calculation and modeling. He found the cyclic key.



This means that the way is open to unlock to power of labor and free it from financial inflation, adding 60% value to economy and solving the dept crisis.



9. WSF News 2015 Overview

- 18 Dec [Digital Life Time Value Planning](#)
- 13 Dec [Paris 2015 Climate Agreement](#)
- 23 Nov [WSF News Update Org, Fin, etc.](#)
- 23 Oct [SDG - World's Largest Lesson](#)
- 25 Sep [Life Mega Event - The Hague](#)
- 08 Sep [New UN-SG Election Terms](#)



- 22 Apr [WSF Family meeting](#)
- 23 Mar [P2015 Goals & Targets](#)
- 15 Mar [Common Cluster Report](#)
- 01 Mar [SD News March](#)
- 09 Feb [Commons on UN HLD](#)
- 08 Feb [Geneva Climate Convention](#)
- 15 Jan [WEF Global Risk report](#)

10. Contact

Laan van Nieuw Oost-Indië 252, 2593 CD, Den Haag, The Netherlands. Phone: (+31) 658 958 108. Email: emile@worldsustainabilityfund.nl.



WSF – World Sustainability Fund

2015 Annual Report

