



WSF



# World Sustainability Fund

## Annual Report 2022

+

## Contracts to effect in 2023



**Dec. 9<sup>th</sup> 2022**

**WSF 11 years**



### Energy, Climate, SDG Ethics

Corona Pandemic in its end-days, Ukraine under Russian shelling, dramatic weather changes, food and water shorts, hyperinflation fueled by oil and gas wars, stagnation in SDG funding and COP27: 2022 was a dramatic year for many!

WSF had another incubating year. Main activities were the build of a Magnet Electric Engine, fundraising in Miami USA, attempts of project finance, opening an office in Armenia, developing a sustainable mining support program, and on top cashing a \$10B investment/sponsoring.

Harold was busy with mining, trade, and Schiphol, Sam focused on Armenia, Ahana on mining support, Joseph on project finance, and Emile on administration and main funding, to name a few. WSF is very very thankful for all the people that supported us in 2022.

### Explanation Financials & Non-Profits

WSF made a minimum number of Organization Hours and Cost, if to be paid all together just a little more than one million euro. The Cost paid where four thousand only. We had no Revenue, however we had impact on the market<sup>\*1</sup>. This came also more clear by a 10B\$ investment sponsoring from which we transit 50% for third parties and their commissioners.

The development of our Balance per 31 December is extraordinary and raced to 26.7 billion euro's. We got a commitment for PPP funding of our 25 billion Country Program Intangible. Our trip to Miami was also for working on the J.K. \$ 1.2 billion and cash in for 3th parties of \$ 2.6 billion. Due to the \$ 10billion investment sponsoring our bank position grew to 4.75 billion.

The Liabilities to SBF, Stichting Bronning Fonds of 250 million contain the non-devoir rights of the initiator of WSF and his descendants, including also their voting right in WSF Council and the aim of realizing SBF integrated healthcare centers. At the end of 2022 the equity of WSF is 4.5 billion euro cash and 22.2 billion euro as immaterial and agreed values. With this means WSF will start to implement her Country Program and all field of actions:

Experts & Funds	U.N. & Major Groups	Country & Region	City & Business	Private & Leisure
Fund for Funds	Federation	Global C. Mgt.	Eco cities	SDG Culture
DRiskR	UNFCCC	Countries	Smart cities	Eco Footprint
Int Rescue	WBG, GEF	S1. C. Office	Rural Areas	Live Education
CDM & SDG	UNDP, UNEP	S2. C. Projects	SDG 4 Business	SDG Program
Consultancy	Major Groups	S3. Multiplying	Business Chain	Projects

### WSF Financials & Non-Profit 2022/23 in €

WSF Organization Hours spend 2022:

Emile 50 x 32 = 1,600 hrs  
Volunteers and partners 44 x 12 x 24 12,672 hrs  
**Total Hours 14,272 hrs**

### Cost, if to be paid

Office, non-contractual to WFBN 10,000  
Organization hours á € 75 per hour 1,070,400  
**Cost, if to be paid 1,080,400**

### Cost paid

General cost 1,400  
Magnet Electric Engine 1,020  
Miami Tour 1,700  
\$10B Investment/Sponsoring P.M.  
**Cost 4,120**

### Revenue

Founder 4,120  
\$10B Interest/Sponsoring P.M.  
**Revenue 4,120**

### Transits from \$10B

Invest/Spon to third A/0.96 €/ \$ 3,840,000,000  
Commissions to third A 960,000,000  
Commissions to third B 750,000,000  
PPP 3,46 x 0,55 r&e 2023 1,903,000,000  
**Transits 7,403,000,000**

**Balance 31-12-2022/23 30,579,948,018**

### Assets

**Intangible 20,230,000,000**  
Vision, Mission, Concepts 20,000,000  
Organization, Mgt Network 20,000,000  
Country Program Brochure + Net 40,000,000  
Projects on stock + expertise 150,000,000  
PPP contacts and agreements 20,000,000,000  
Shift, Bronning, dLv life cycle EvE property

### Debtors

J.K. 1.2B\$ x 0.96 to Euro 1,194,039,838  
Interest 65,753 \$/day/1Jan2023 P.M.  
To cash in for 3th parties 2.6B\$ 2,236,000,000  
Interest 142,465 \$/day/6Mar2021 PM  
PPP 3,46B r&e 2023 3,460,000,000

### Bank

Own Cash, from \$10B inv/spo 4,080,000,300  
Cash Commissions from third B 670,000,000  
SBLC Goddess Nakayima Project 346,000,000

### Not yet cash

Invest Contracts under dev. 850,000,000

**Liabilities WSF 250,092,120**

WFBN office use, cumulative 70,000  
Founder cumulative 22,120  
SBF FF rights, non-devoir 240,000,000  
Reservation for volunteers' reward 10,000,000

### Equity WSF

**Realized 4,549,907,880**  
Immaterial and agreed 22,274,039,838

**Creditors, Loans, Debts 0**

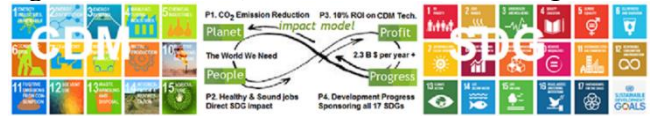


## World Sustainability Fund

### Nigeria Introduction 120M USD Investment for Climate and SDGs



**Statement of support and commitment**  
WSF express her continued support for the SDG Agenda 2015 - 2030 and the UNGC Principles.



...

For 200 countries

### WSF Country Program Nigeria

ESTIMATE INITIAL CDM PROJECT INVESTMENT	Investment Million USD, or more	MtCO2eq Reduction / 10M USD	MW % Return on Investment	Direct and indirect Labor
1 RENEWABLE ENERGY (WIND)	10	15	8	
2 RENEWABLE ENERGY (SOLAR)	10	3	2	
3 RENEWABLE ENERGY (HYDRO)	10	32	10	
4 RENEWABLE ENERGY (BIOMASS)	0	48	9	
5 ENERGY DISTRIBUTION	20			
6 ENERGY DEMAND, own generation	20	50	10	
7 MANUFACTURING INDUSTRIES	0			Consultancy based
8 CHEM. INDUSTRIES, cement	0	138		Consultancy based
9 TRANSPORT	10	45		
10 MINING, coal bed/mine methane	0	292	11	Consultancy based
11 FUGITIVE EMISSIONS, ALSO SECTOR 11	0	214	5	Consultancy based
12 WASTE HANDLING, Landfill gas	10	121		
13 AFFORESTATION	10	49/yr		
14 REFORESTATION	10	49/yr		
15 AGRICULTURE	10	24/yr		
<b>TOTAL</b>	<b>120</b>	<b>436</b>	<b>70</b>	

Sponsor Investment 1M USD initial, till 40% of 120M USD final.

Program under U.N. protocol

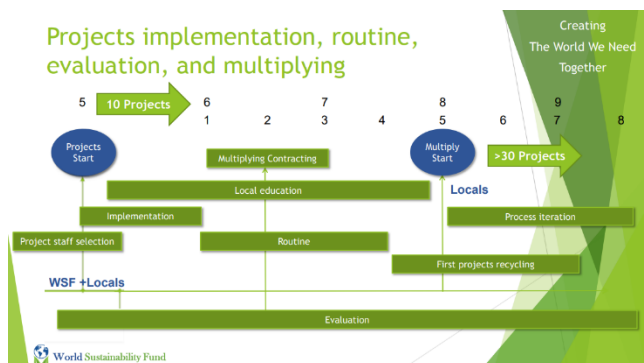
WSF What

**Story of Sam as Country Manager Armenia and Board Member WSF**

...

Ten NDC based projects per country

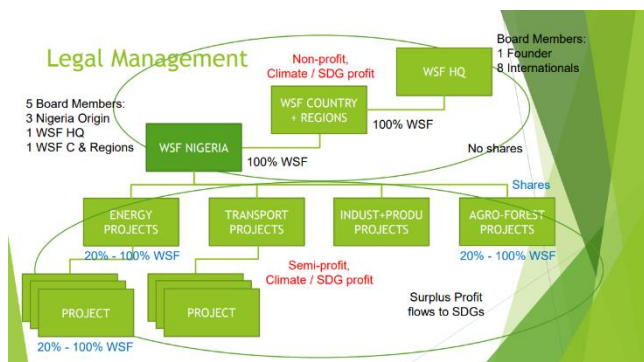
### Projects implementation, routine, evaluation, and multiplying



**Story of Prince Joseph Simbwa, Africa Representative and Council Member WSF**

...

Multiplying with factor three every year



A strong legal structure with financial profit companies in the field under the 100% non-profit WSF regional and global fund.





Emile van Essen, 1991 Opening National Sustainability Center.

**INTERNAL DOCUMENT**

**NOT FOR PUBLICATION**

**Contact**

Office of Emile van Essen, Founding Chair  
Laan van Nieuw Oost-Indië 252,  
2593 CD, Den Haag, The Netherlands  
Phone: (+31) 658 958 108  
E: [emile.vanessen@worldsustainabilityfund.org](mailto:emile.vanessen@worldsustainabilityfund.org)  
Website: [worldsustainabilityfund.nl](http://worldsustainabilityfund.nl)